

# A PERSONALIZED NAVIGATION PROGRAM TO INCREASE CLINICAL TRIAL PARTICIPATION OF LUNG CANCER PATIENTS

ANDREW CIUPEK, PHD, TARA PERLOFF, JENNIFER C. KING, PHD

## BACKGROUND

Only 3% to 5% of newly diagnosed cancer patients participate in clinical trials (Lara PN, 2001), despite established clinical guidelines (i.e. NCCN) that recommend all cancer patients be considered for clinical trials as part of standard care.

In a previous survey of U.S. lung cancer patients we found only 22% reported discussing clinical trial participation with their oncologist at the time of making treatment decisions (Fenton L, 2009).

We hypothesized that a personalized navigation program could increase the amount of lung cancer patients initiating trial conversations with their oncologists and ultimately trial participation.

## METHODS

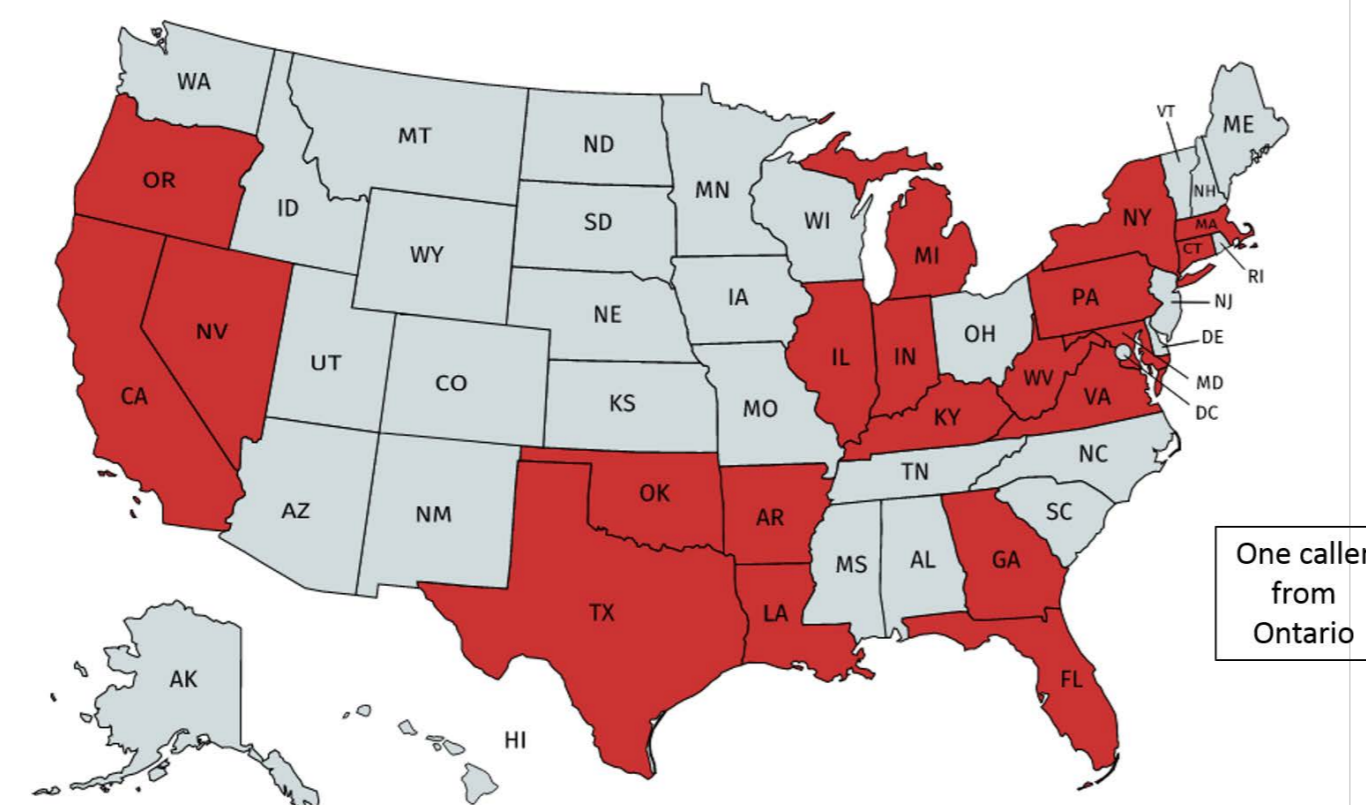
Callers to Lung Cancer Alliance's 1-800 support line between 8/1/2016 and 6/7/2017 were asked if they had considered clinical trial participation and willing callers were referred to a clinical trial navigator for further discussion about clinical trial options.

Navigators provided basic clinical trial education and a personalized list of clinical trial matches based on discussion. Patients were encouraged to discuss these trials with their treating oncologist. Navigators then regularly followed up with participants, via email or phone, at 2 to 4 week intervals, to offer further support and collect outcomes information.

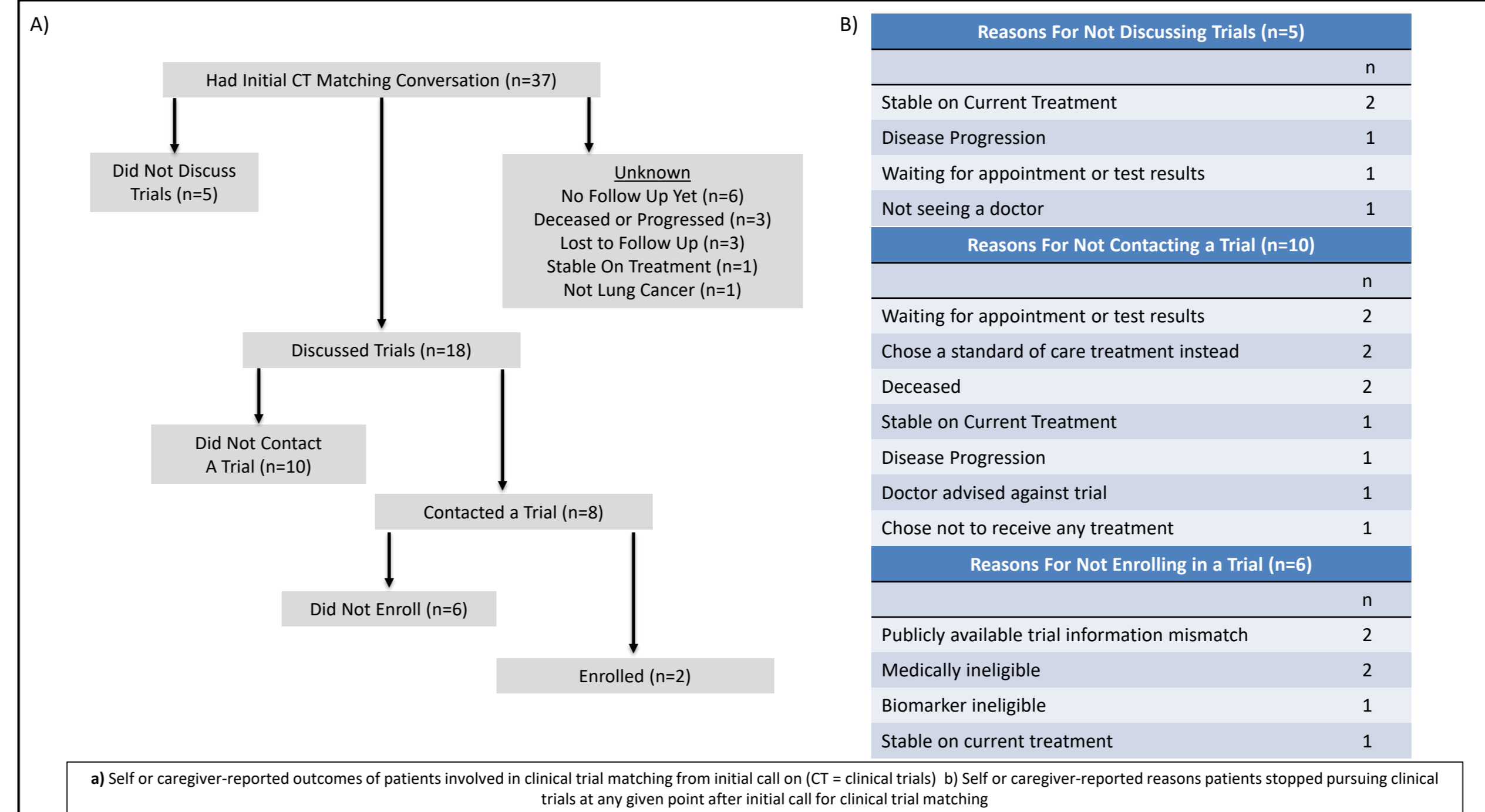
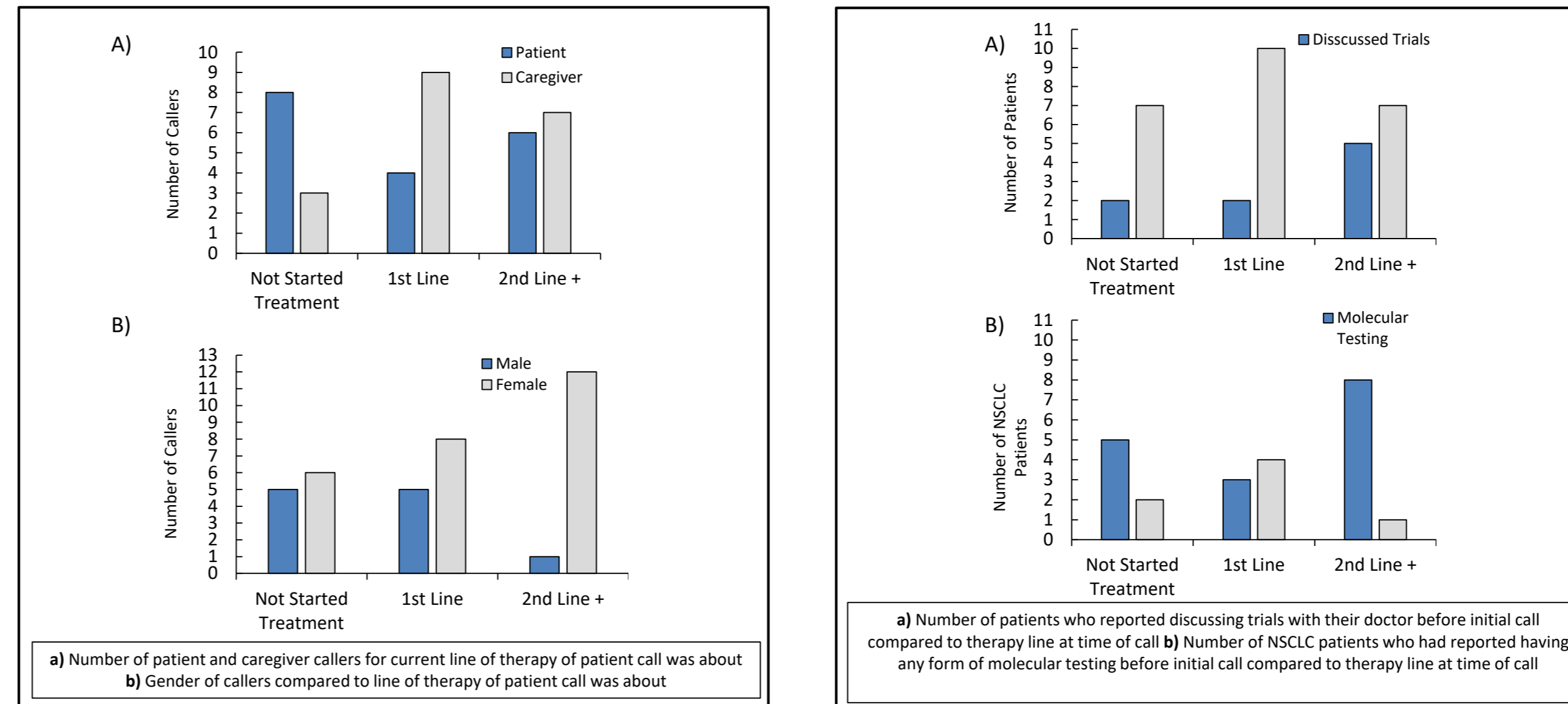
## DEMOGRAPHICS OF CALLERS (N=37)

	n	%
<b>Gender:</b>		
Female	26	70
<b>Age:</b>		
< 50	7	19
50 - 70	15	41
70 +	10	27
Unknown	5	13
<b>Relationship:</b>		
Patient	18	49
Spouse	5	25
<b>Lung Cancer Type:</b>		
NSCLC	23	62
SCLC	11	30
Did not know	2	5
<b>Stage:</b>		
IV	30	81
IIIA to IIIB	4	11
<b>Treatment Line:</b>		
Not Started	11	30
1 <sup>st</sup>	13	35
2 <sup>nd</sup> + (2 - 4)	13	35

## LOCATION OF CALLERS



## RESULTS



## SUMMARY/DISCUSSION

- The role and gender of those initiating clinical trials discussions may differ between treatment lines
- For many patients clinical trials discussions are delayed to later treatment lines; molecular testing for many NSCLC patients may also be similarly delayed
- Only 35% of callers had discussed clinical trials with their doctors prior to calling – this has increased to 60% since the program started
- Program participants have successfully enrolled in trials
- The program is able to identify barriers to clinical trials enrollment

## FUTURE DIRECTIONS

- Implement initiatives to actively increase utilization of navigation program by patients and caregivers
- Identify prevalence of barriers to trial participation and further define barriers with additional criteria (type of treatment center, other patient characteristics, etc.)

## CONTACT

ANDREW CIUPEK, PHD  
Clinical Research Coordinator / Clinical Trials Navigator  
aciupek@lungcanceralliance.org

LUNG CANCER ALLIANCE  
www.lungcanceralliance.org